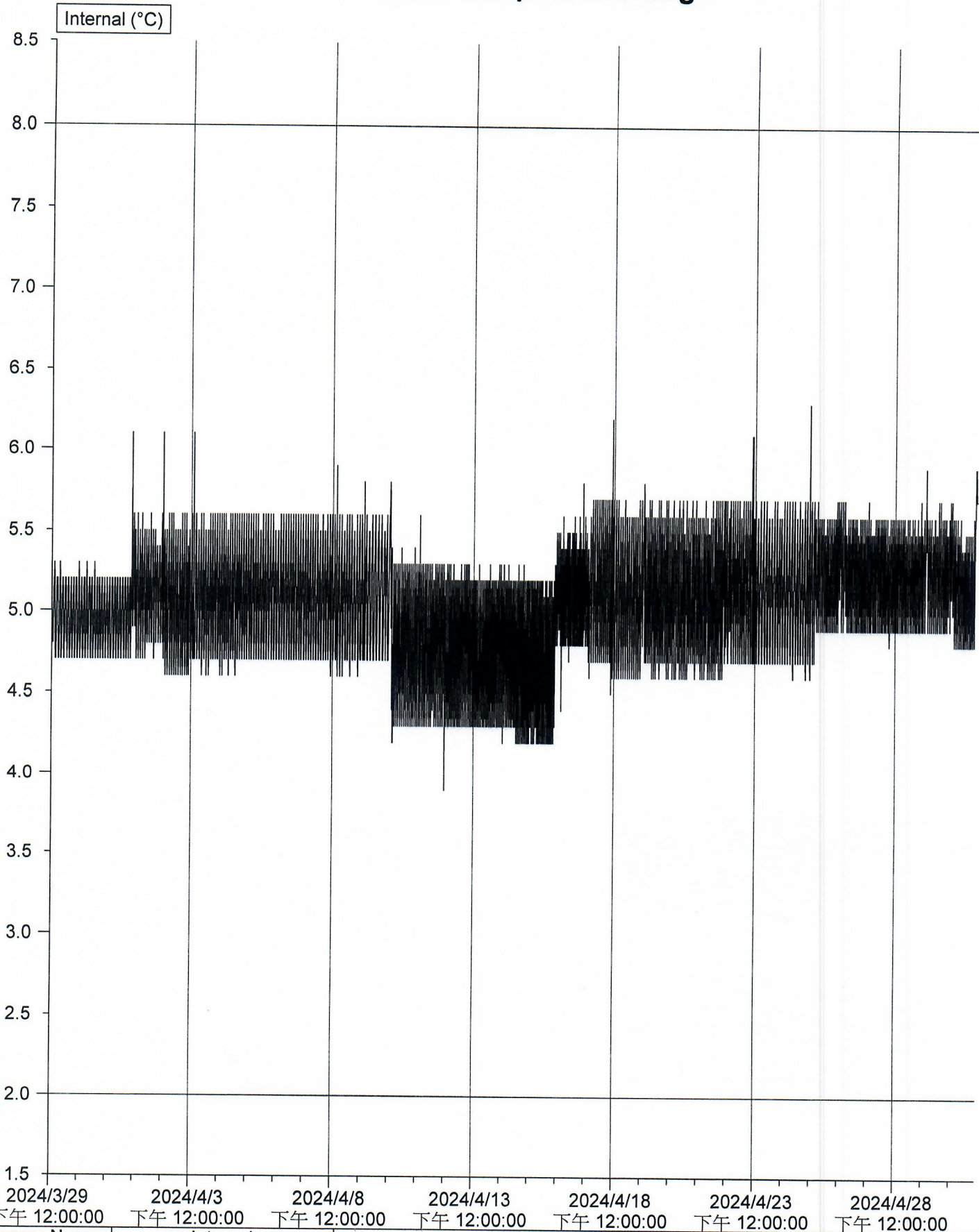


# TCVGH Temperature Log



Sensor Name	Internal
Legend	
Description	PHCL-C009
Serial Number	1931-0084
Product Code	EI-IN-D-32-L
Start	2024/3/29 下午 12:00:00
Finish	2024/5/1 上午 10:10:00
Sensor Range	-40.5 to 70.4 °C
Specification	2.0 to 8.0 °C
Average	5.1 °C
Highest	6.3 °C
Lowest	3.9 °C

*tuansu*  
01 May 2024